

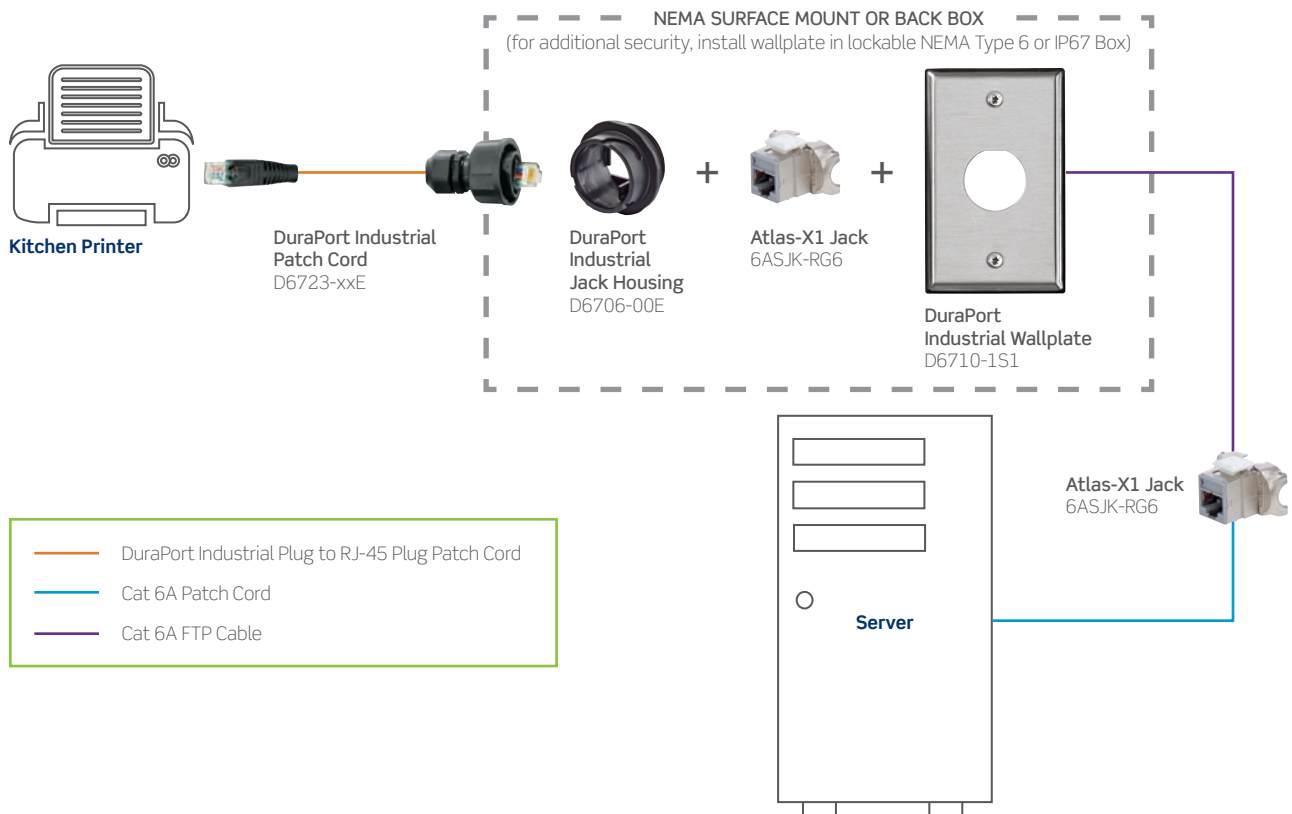
SOLUTION BRIEF

CAT 6A DURAPORT® FOR COMMERCIAL KITCHENS OR EXTREME CLIMATE EXPOSURE

The Internet of Things connects devices in areas not associated with reliable network connections. Industrial kitchens, tropical climates, outdoor areas, and even car washes offer services benefiting from a network connection. Protecting those network connections from the elements can be the difference between a satisfied customer and lost business. DuraPort systems provide a secure, water- and dust-tight wallplate and cable assembly to stand up to the harsh conditions found in locations from commercial kitchens to outdoor vending machine kiosks.



- IP67-rated environmental sealing (dust/water protection)
- Patented over-molded wallplate gasket and embedded sealing feature on wallplate mounting holes ensure watertight fit and proper orientation in standard NEMA boxes
- Twist-lock mating of data connection allows for easy installations and provides a robust seal
- Compatible with Atlas-X1® and eXtreme® Cat 6A shielded jacks
- Ensures alien crosstalk (AXT), EMI/RFI immunity, and PoE performance



DURAPORT® INDUSTRIAL JACK HOUSING



- Accepts all QuickPort® jacks for fast installation and wide selection of jack types and colors
- Encapsulated RJ-45 design protects integral components
- Patented design

PART NUMBERS

DuraPort Housing with Jack Cap	D6700-00E
DuraPort Replacement Jack Cap	D6701-00E

DURAPORT INDUSTRIAL CAT 6A S/FTP PATCH CORDS



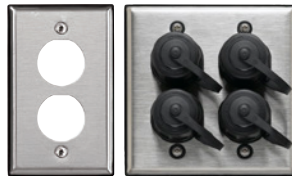
- Industrial Plug to RJ-45 Plug
- Eight standard lengths (custom lengths available)
- Twist-lock design for fast installation

PART NUMBERS

DuraPort Industrial Plug to RJ-45 Plug Patch Cord, 3 feet	D6723-03E
DuraPort Industrial Plug to RJ-45 Plug Patch Cord, 5 feet	D6723-05E
DuraPort Industrial Plug to RJ-45 Plug Patch Cord, 7 feet	D6723-07E
DuraPort Industrial Plug to RJ-45 Plug Patch Cord, 10 feet	D6723-10E
DuraPort Industrial Plug to RJ-45 Plug Patch Cord, 15 feet	D6723-15E
DuraPort Industrial Plug to RJ-45 Plug Patch Cord, 20 feet	D6723-20E
DuraPort Industrial Plug to RJ-45 Plug Patch Cord, 35 feet	D6723-35E
DuraPort Industrial Plug to RJ-45 Plug Patch Cord, 50 feet	D6723-50E

Note: Industrial plug to industrial plug patch cords also available.

DURAPORT INDUSTRIAL WALLPLATES



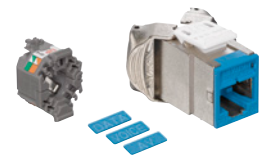
- Provide a durable, easy-to-clean solution for demanding environments
- Over-molded gasket ensures watertight fit
- Kits include jack housing(s), jack cap(s), and stainless steel wallplate

PART NUMBERS

DuraPort Industrial Wallplate, stainless steel, 1 port, single gang*	D6710-1S1
DuraPort Industrial Wallplate, stainless steel, 2 port, single gang*	D6710-1S2
DuraPort Industrial Wallplate, stainless steel, 2 port, dual gang*	D6710-2S2
DuraPort Industrial Wallplate, stainless steel, 4 port, dual gang*	D6710-2S4
DuraPort Industrial Kit, 1 port, single gang	D670K-1S1
DuraPort Industrial Kit, 2 port, single gang	D670K-1S2
DuraPort Industrial Kit, 2 port, dual gang	D670K-2S2
DuraPort Industrial Kit, 4 port, dual gang	D670K-2S4

* = Purchase jack housing(s) D6700-00E separately.

ATLAS-X1® CAT 6A SHIELDED QUICKPORT JACKS



- Tested and approved for use in air-handling spaces (plenum rating) in accordance with UL Standard 2043
- Independently tested and guaranteed to exceed all component, permanent link, and channel margins
- Patented Retention Force Technology™ protects against tine damage and maintains contact force between plug and jack, preventing arcing from intermittent disconnects in PoE applications
- PoE optimized tine geometry prevents arcing damage where plug and jack make contact, extending the life of the jack and ensuring maximum performance (see specification sheets for full PoE capabilities)
- Solid metal body dissipates 53% more heat than plastic, minimizing damage from excess heat in PoE applications
- Available with internal shutter to protect from dust and debris
- Unique tool-free design requires no specialized termination or re-termination tool
- Short jack design supports a wider range of applications (e.g. shallow boxes, enclosures, bend radius, etc.)
- Interchangeable icons in 13 colors (VOICE, DATA, AV, and blank) make it easy to identify and track data, voice, or other functions (select jacks include color matching icons)
- Proudly manufactured in the U.S.

PART NUMBERS

Atlas-X1 Cat 6A Shielded QuickPort Jack	6ASJK-R*6
---	-----------

* = Color: White (W), Light Almond (T), Ivory (I), Yellow (Y), Orange (O), Crimson (C), Dark Red (R), Purple (P), Blue (L), Green (V), Gray (G), Black (E), Brown (B)

ATLAS-X1 CAT 6A PATCH CORDS



- SlimLine boot cords feature narrow profile to reduce congestion in high-density applications
- Snagless boot design prevents tab breakage
- AXT suppression and EMI/RFI protection

PART NUMBERS

Atlas-X1 Component-Rated SlimLine Boot Patch Cord	6AS10-xx*
---	-----------

xx = Length: 3' (03), 5' (05), 7' (07), 10' (10), 15' (15), 20' (20)

* = Color: Yellow (Y), Red (R), Black (E), White (W), Blue (L), Green (G), Grey (S)
For assistance customizing your cords, please visit leviton.com/configurator or call Tech Support at 800.824.3005



Leviton DuraPort Cat 6 UTP System available at Leviton.com/DuraPort.